



## SM-08 Double Arm Solar Street Light

### Product Description

SM-08 Double Arm Solar Street Light is in an off-grid hybrid outdoor led lighting system that eliminates the reliance on power grids that conventional street lighting systems have. SM-08 Double Arm Solar Street Lights are able to generate power from solar energy in the daytime by themselves. These SM-08 Double Arm Solar Street Lights are very cost effective and really easy to install. It will be configured according to the environmental conditions of the installation site as well as your specific requirements. The lighting from SM-08 Double Arm Solar Street Lights System lasts more than 10 hours per night, that's why demand for this product is really high due to both its effectiveness and efficiency.

### Benefits of Solar Street Light:

1. It can be easily installed without the need of paving complicated lines. All you need is to have a cement base and it is ok to fix it with screws.
2. Building solar-energy road lamps is a one-time investment, which does not need any costs for maintenance or servicing. The cost can be returned in around 3 years, and you can see the benefits in the long term.
3. There is no potential safety risk. The current for the solar-energy lamps is the safe current of DC36v, which does not cause any safety problem.
4. The main components for the solar-energy lamps are the solar cell panel with the life span of 25 years and the LED with the average life span of more than 50000 hours. The storage

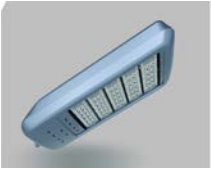
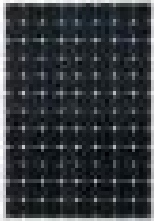



# Zhejiang Seming Electronic Co., Ltd

battery has a life span of 5-7 years.

5. Green and environmentally friendly: it is its special features and advantages in favor of high-rank residential areas, and can keep reducing the realty management costs and reduce the costs of public areas for the residents.





Detailed Parameters:

No	Item	Picture	Parameters
1	SM-08 Led Lamp		Power:20w/30w/40w/50w/60w/80w/100w Chip: Philips/ Bridgelux/Cree/ Epistar Lumens:90lm/w Voltage:DC12V/24V Color temperature:3000-6500K
2	Solar Panels		Power:2*50w/2*70w/2*100w/2*120w/2*140w/2*200w /2*240w Nominal Voltage:18V Efficiency of solar cells:18% Material: Mono Cells/Poly Cells
3	Battery		Capacity:2*38AH /2*65AH/2*80AH /2*100AH /2*135AH /2*180AH /2*200AH Type: lead-acid

Address: Haicheng Road, Baiguan Industrial District, Shangyu Area, Shaoxing City, Zhejiang province, China; Tel: +861 8267537265, **WhatsApp: +8618267537265; Email: [sales@seminglighting.com](mailto:sales@seminglighting.com)**



# Zhejiang Seming Electronic Co., Ltd

			Nominal Voltage:12V/24V
4	Battery Box		Material: Plastics IP Rating:IP67
5	Controller		Rated Current:5A/10A/15A/20A Nominal Voltage:12V/24V
6	Pole		Height: 5m(A); Diameter: 80/140mm(d/D); Thickness: 3.5mm(B);Flange Plate:240*12mm(W*T)
			Height: 6m(A); Diameter: 90/150mm(d/D); Thickness: 3.5mm(B);Flange Plate:260*12mm(W*T)
			Height: 7m(A); Diameter: 90/160mm(d/D); Thickness: 4mm(B);Flange Plate:280*14mm(W*T)
			Height: 8m(A); Diameter: 90/170mm(d/D); Thickness: 4mm(B);Flange Plate:300*14mm(W*T)
			Height: 9m(A); Diameter: 90/180mm(d/D); Thickness: 4.5mm(B);Flange Plate:350*16mm(W*T)
			Height:10m(A); Diameter: 100/200mm(d/D); Thickness: 5mm(B);Flange Plate:400*18mm(W*T)
7	Anchor Bolt		4-M16; 4-M18; 4-M20
8	Cables		14m/16m/19m/22m/24m/26m
9	work time:12 hours per day,1 day backup		

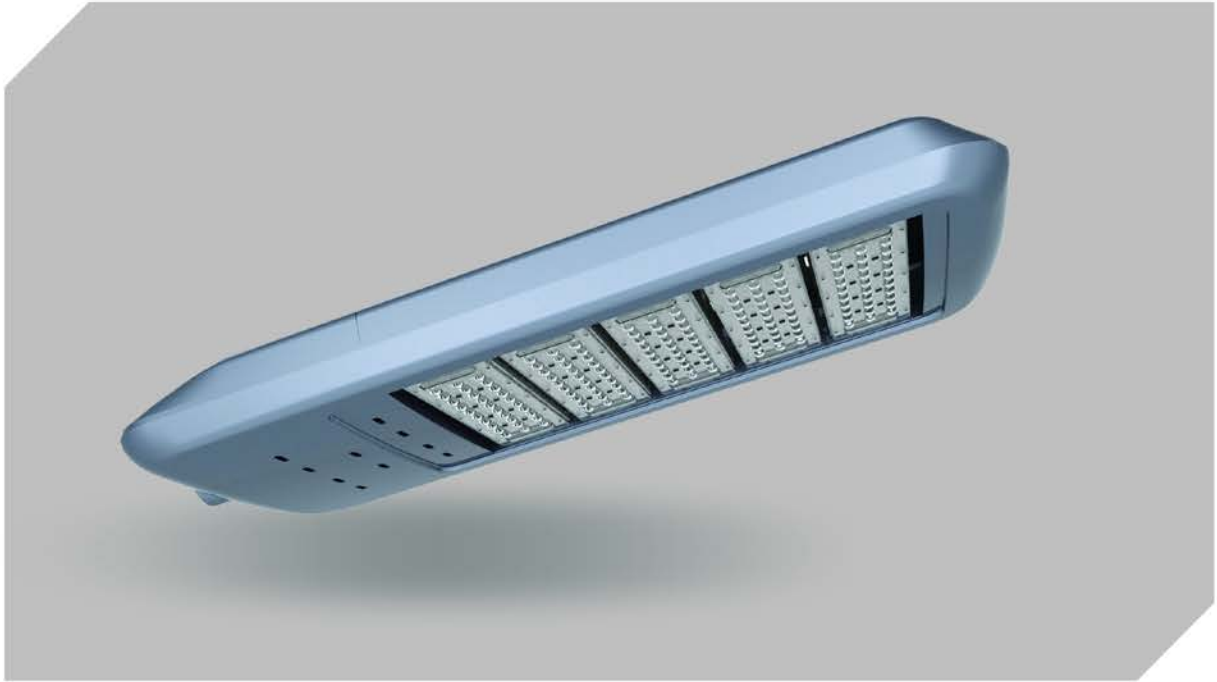
Address: Haicheng Road, Baiguan Industrial District, Shangyu Area, Shaoxing City, Zhejiang province, China; Tel: +861 8267537265, **WhatsApp: +8618267537265**; **Email: [sales@seminglighting.com](mailto:sales@seminglighting.com)**



# Zhejiang Seming Electronic Co., Ltd

---

Product Display:





# Zhejiang Seming Electronic Co., Ltd

---

Application:



Address: Haicheng Road, Baiguan Industrial District, Shangyu Area, Shaoxing City, Zhejiang province, China; Tel: +861 8267537265, **WhatsApp: +8618267537265**; **Email: [sales@seminglighting.com](mailto:sales@seminglighting.com)**