



## SM-06 LED Street light

### Product Description

SM-06 LED Street light is better than normal LED lights for its large number light sources. Which can be different with specific model and enables different light intensity. Also, with the help of its advanced chip, the speed of it to emit light would be much better than other LED street lights in the market. And the color rendering index of SM-06 LED Street light is higher than many other lights, helping drivers to identify the different signs correctly and reduce the incidence of traffic accidents effectively. What's more, SM-06 LED Street light is competitive for its outstanding ability against harsh working environments such as heavy rain, low temperature, and so on.

### Benefits of LED Street light:

1. The original high efficiency Lumileds LED chip, single light damage will not affect the whole light.
2. The longitudinal uniformity 0.8, more comfortable and safety for driver.
3. Water proof of IP65, avoid water vapor or corrosive gas erosion of chips and circuit boards.
4. AC85-305V, suitable for many countries.
5. Competitive for its outstanding working ability against harsh environments such as heavy rain, low temperature, and so on.

### Detailed Parameters:

Address: Haicheng Road, Baiguan Industrial District, Shangyu Area, Shaoxing City, Zhejiang province, China; Tel: +861 8267537265, **WhatsApp: +8618267537265; Email: [sales@seminglighting.com](mailto:sales@seminglighting.com)**



## Zhejiang Seming Electronic Co., Ltd

Model	SM-06 LED	
Size	30W :480*355*155mm(L*W*H),	8.7KG
	60W :560*355*155 mm(L*W*H)	9.7KG
	90W :640*355*155 mm(L*W*H)	10.7KG
	120W :720*355*155 mm(L*W*H)	11.7KG
	150W :800*355*155 mm(L*W*H)	12.7KG
	180W :880*355*155mm(L*W*H)	13.7KG
	210W :960*355*155mm(L*W*H)	14.7KG
	240W :1040*355*155mm(L*W*H)	15.7KG
	270W :1120*355*155mm(L*W*H)	16.7KG
	300W :1200*355*155mm(L*W*H)	17.7KG
Max Power	30W/60W/90W/120W/150W/180W/210W/240W/270W/300W	
Input Voltage	AC90V-305V, 50hz-60hz, DC12/24V	
Driver Brand	PHILIP /MEANWELL/ZHIHE and others	
Chip Brand	PHILIPS/BRIDGELUX/CREE and others	
Light Luminous Efficiency	>110LM/W	
Uniformity	>0.8	
Average illumination	6m>25LUX, 8m>20LUX	
LED Luminous Efficiency	>90%	

Address: Haicheng Road, Baiguan Industrial District, Shangyu Area, Shaoxing City, Zhejiang province, China; Tel: +861 8267537265, **WhatsApp: +8618267537265; Email: [sales@seminglighting.com](mailto:sales@seminglighting.com)**



## Zhejiang Seming Electronic Co., Ltd

Color Temperature	3000-6500K
CRI	Ra > 75
Power Efficiency	> 90%
Power Factor	> 0.95
Working Environment	- 60°C -70°C
Material	die-casting aluminum
IP Rating	IP65
Working Life	> 50000H
Warranty	3-5 Years

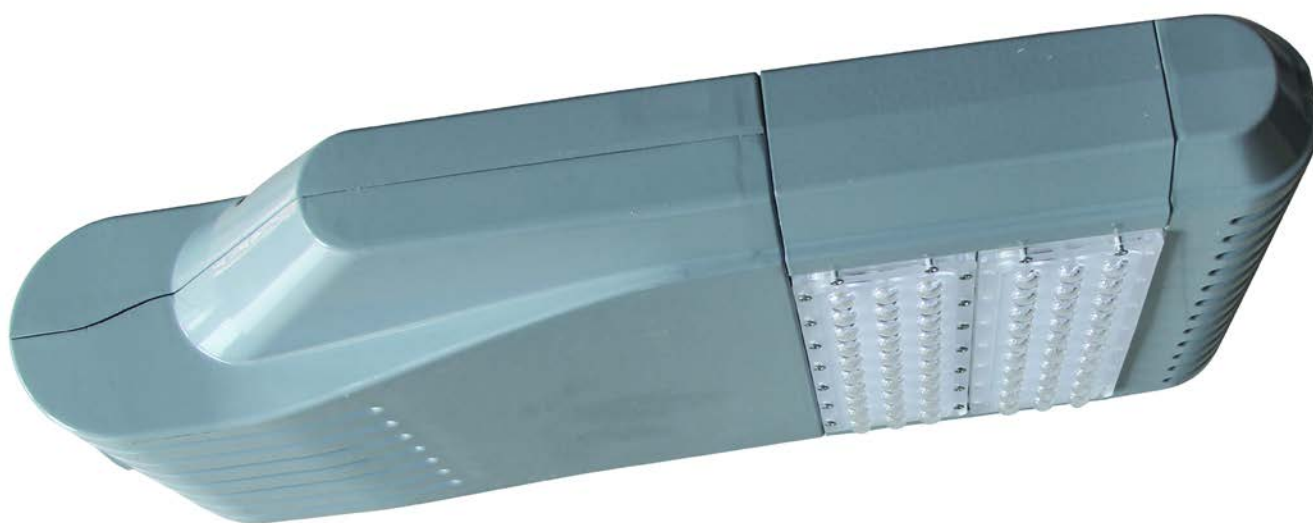
Product Display:

Address: Haicheng Road, Baiguan Industrial District, Shangyu Area, Shaoxing City, Zhejiang province, China; Tel: +861 8267537265, **WhatsApp: +8618267537265; Email: [sales@seminglighting.com](mailto:sales@seminglighting.com)**



**Zhejiang Seming Electronic Co., Ltd**

---



Address: Haicheng Road, Baiguan Industrial District, Shangyu Area, Shaoxing City, Zhejiang province, China; Tel: +861 8267537265, **WhatsApp: +8618267537265; Email: [sales@seminglighting.com](mailto:sales@seminglighting.com)**



**Zhejiang Seming Electronic Co., Ltd**

---



Address: Haicheng Road, Baiguan Industrial District, Shangyu Area, Shaoxing City, Zhejiang province, China; Tel: +861 8267537265, **WhatsApp: +8618267537265; Email: [sales@seminglighting.com](mailto:sales@seminglighting.com)**



**Zhejiang Seming Electronic Co., Ltd**

---



Address: Haicheng Road, Baiguan Industrial District, Shangyu Area, Shaoxing City, Zhejiang province, China; Tel: +861 8267537265, **WhatsApp: +8618267537265; Email: [sales@seminglighting.com](mailto:sales@seminglighting.com)**