



All In One LED Solar Street Light



PHILIPS
LUMILEDS



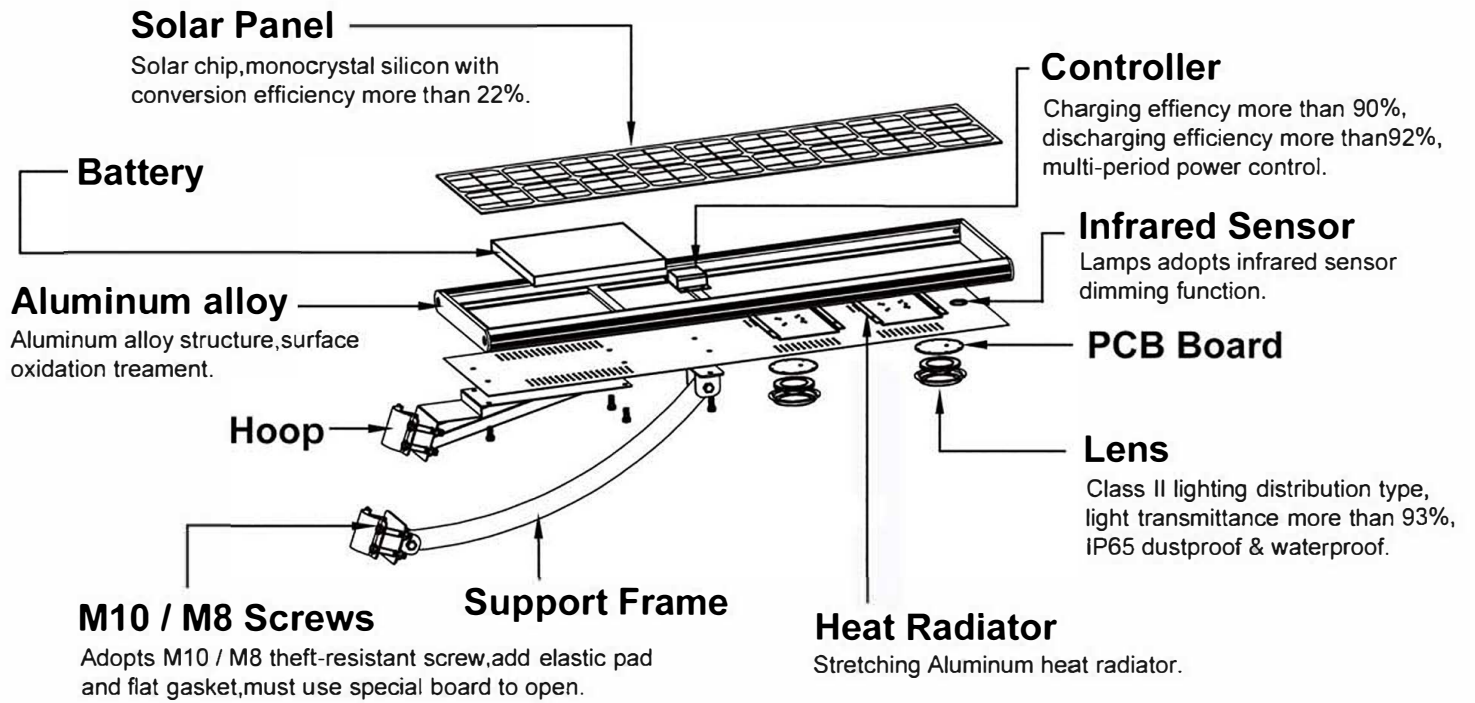
RoHS

CB

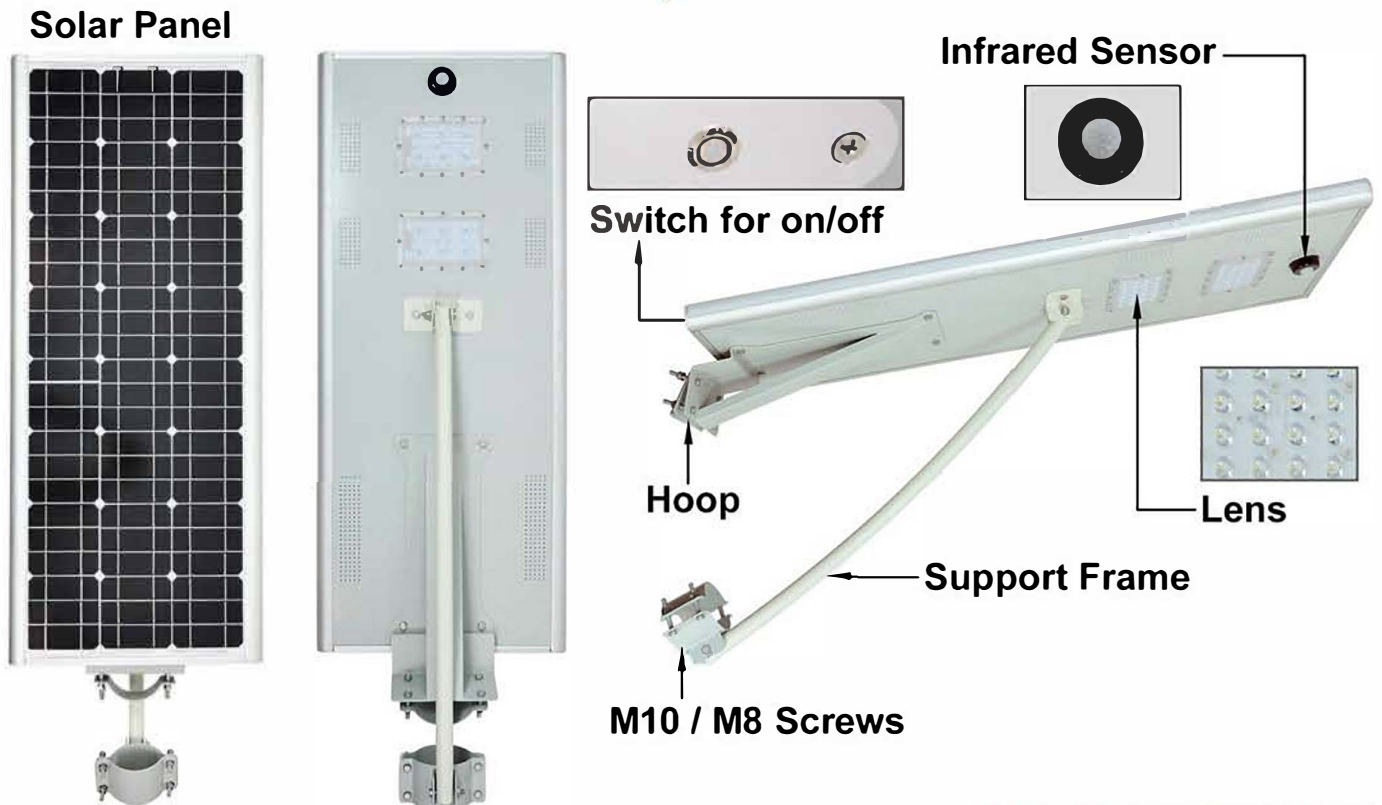
IP65

IK10

Function & Features



Physical map

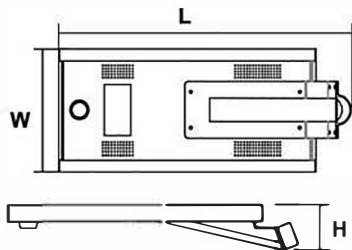


Technical Parameters

Model NO.	SMT05Z-FVD	SMT10Z-FVD	SMT15Z-FVD	SMT20Z-FVD	SMT30Z-FVD	SMT40Z-FVD	SMT50Z-FVD	SMT80Z-FVD
Watts	5W	10W	15W	20W	30W	40W	50W	80W
Voltage	DC12V							
Light Efficacy	100lm/w							
C.C.T	4000K / 5000K / 6000K							
C.R.I	≥70							
LED Chip	Philips Lumileds							
Control System	Turn on/off automatically+Photocell+Infrared Sensor							
Monocrystalline SolarPanel	9W/18V	18W/18V	27W/18V	36W/18V	45W/18V	60W/18V	80W/18V	88W/36V
Lithium Battery	4Ah/12.8V	9Ah/12.8V	12Ah/12.8V	15Ah/12.8V	21Ah/12.8V	27Ah/12.8V	15Ah/25.6V	24Ah/25.6V
Full-Load Working Time	8H	8H	7H	7H	7H	7H	7H	7H
Dimming Working Time(20%)	>35H	>35H	>30H	>30H	>30H	>30H	>30H	>30H
Charging Time	6-8H(Strong Sunlight)							
Working Temperature	-30°C~60°C							
LED Quantity	9PCS	15PCS	15PCS	24PCS	30PCS	48PCS	48PCS	96PCS
Install Height	3-4M	3-4M	4-5M	4-5M	5-6M	5-6M	5-6M	≥6M

Product Size

Unit: mm



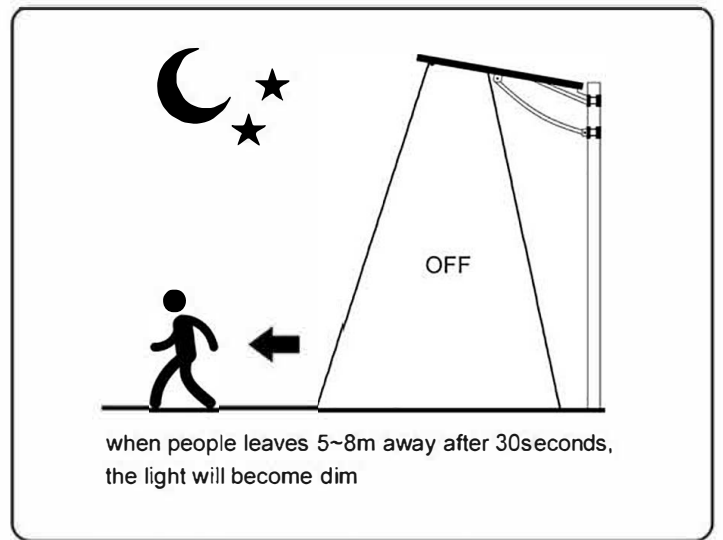
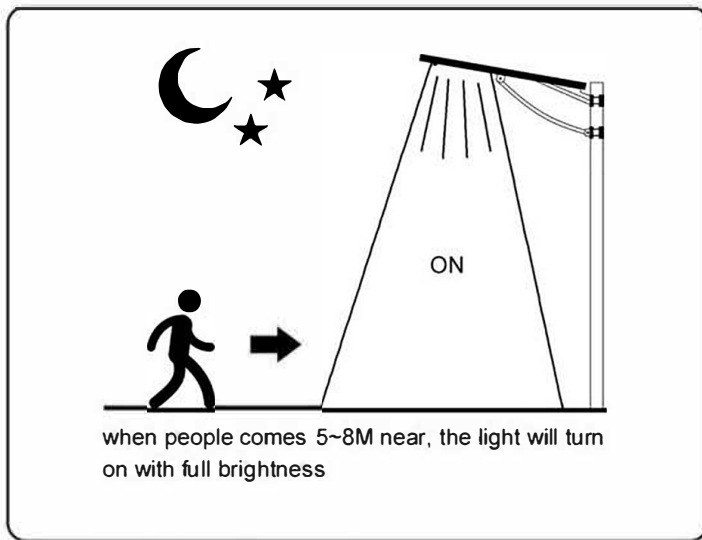
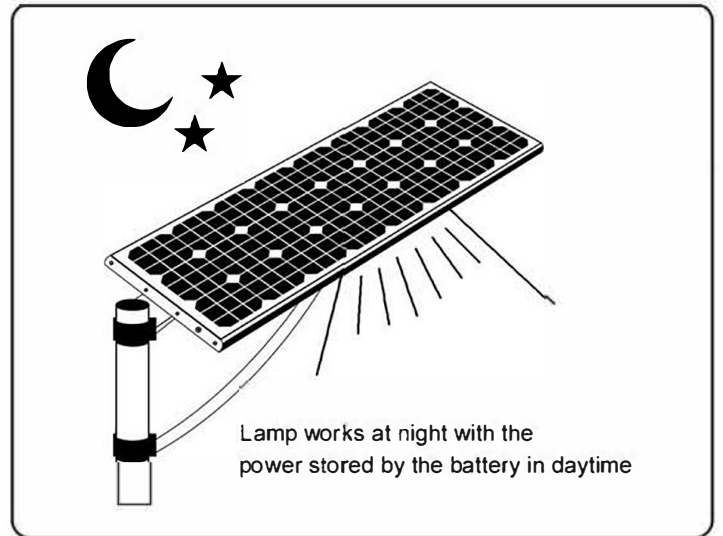
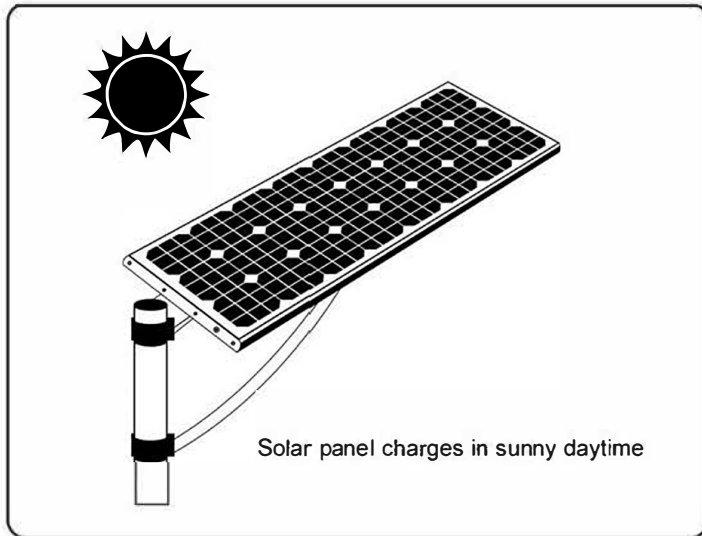
Model	SMT05Z-FVD SMT10Z-FVD	SMT15Z-FVD	SMT20Z-FVD	SMT30Z-FVD	SMT40Z-FVD	SMT50Z-FVD	SMT80Z-FVD
L	530	780	920	1155	1155	1155	1385
W	325	325	325	325	380	450	450
H	80	140	140	140	140	140	345

Packing Size

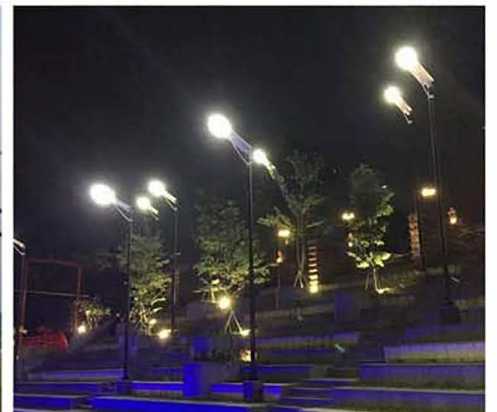


Model NO.	Lamp (L*W*H)	Bracket(L*W*H)
SMT05Z-FVD	560*390*220mm (2sets/CTN)	/
SMT10Z-FVD	560*390*220mm (2sets/CTN)	/
SMT15Z-FVD	860*370*380mm (2sets/CTN)	/
SMT20Z-FVD	900*370*220mm (2sets/CTN)	460*170*330mm (6sets/CTN)
SMT30Z-FVD	1160*370*220mm (2sets/CTN)	920*200*130mm (2sets/CTN)
SMT40Z-FVD	1160*440*220mm (2sets/CTN)	920*200*130mm (2sets/CTN)
SMT50Z-FVD	1160*510*220mm (2sets/CTN)	920*200*130mm (2sets/CTN)
SMT80Z-FVD	1450*550*220mm (1set/CTN)	770*320*260mm (2sets/CTN)

Working Process Instructions



Application Scenes



Zhejiang Seming Electronic Co.,Ltd.

Add:Haicheng Road, Baiguan Industrial District, Shangyu Area, Shaoxing City,

Zhejiang Province,China.